

**INSTALLATION INSTRUCTIONS FOR INSTALLING THE REPLACEMENT POWER CORD KIT FOR USE WITH MODELS S160, SA160, ST210 & SS210, S260, ST310, SHR33/40, RDV33/40, DBV, VIS25/35, VIN, GC3, MED, SDVI, PS40, PI40, E260, C260, C310, C160, CA160, C210 AND CA210**

**KIT CONTENTS (See Figure 1):**

Please ensure that all these parts are in the box

- 2 ea. Insulated Butt Connectors (item #1)
- 2 ea. Insulated Female Connectors (item #2)
- 1 ea. Wire Nut (item #3)
- 1 ea. Insulated Male Connector (item #4)
- 1 ea. Insulated Female 90° Connector (item #5)
- 1 ea. 5/32" Rivet (item #6)
- 1 ea. Ground Screw and Star Washer (item #7)
- 1 ea. Power Cord (item #8)
- 1 ea. Instruction Sheet

**TOOLS / SUPPLIES NEEDED:**

- Wire Crimper
- 5/32" Allen Wrench Or T-Handle Wrench

*For models shown in Figures 5 and 6 will also require the following tools:*

- Drill Motor and #18 (.170") drill bit
- Rivet Gun With 5/32" Nose (manual or pneumatic)



**GENERAL INFORMATION**

**READ THIS INSTRUCTION SHEET IN ITS ENTIRETY BEFORE BEGINNING THE INSTALLATION.**

**ALL WARNINGS AND PRECAUTIONS IN THE INSTALLATION AND OPERATION MANUAL PROVIDED WITH THE APPLIANCE APPLY TO THESE INSTRUCTIONS.**

**If you encounter any problems, need clarification of these instructions or are not qualified to properly install this kit, contact your local distributor or dealer.**

**CAUTION: LABEL ALL WIRES PRIOR TO DISCONNECTION WHEN SERVICING CONTROLS. WIRING ERRORS CAN CAUSE IMPROPER AND DANGEROUS OPERATION. VERIFY PROPER OPERATION AFTER SERVICING.**

**⚠ WARNING**

**Once the new power cord is properly installed, it must be plugged directly into a properly grounded three-prong receptacle, 120 VAC, 60 Hz, single phase power supply. Do not cut or remove the grounding prong from this plug. Do not route power cord under or in front of appliance.**

**Ground supply (green) lead must be connected to the wire attached to the green ground screw located on the unit or blower assembly. Failure to do so will result in a potential safety hazard. The appliance must be electrically grounded in accordance with local codes or, in the absence of local codes, the National Electrical Code, ANSI/NFPA 70-latest edition. (In Canada, the current CSA C22-1 Canadian Electrical Code).**

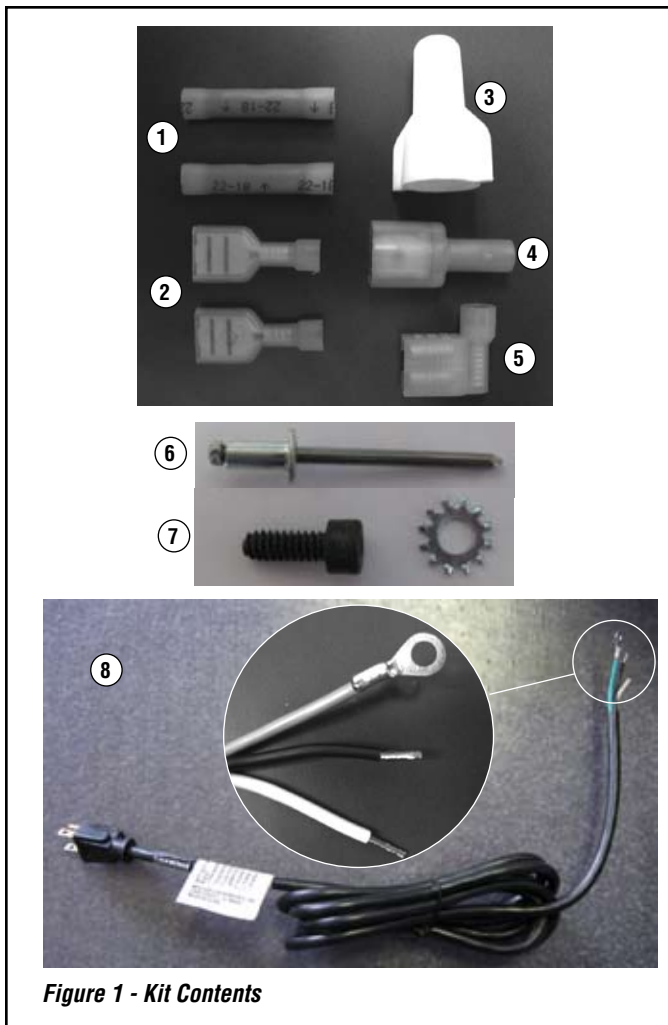


Figure 1 - Kit Contents

## INSTALLATION INSTRUCTIONS

### Step 1. UNPLUG THE EXISTING POWER CORD!

**Step 2.** Look at **Figure 2 through 6** to identify the correct connectors needed for your appliance. Locate the same connectors provided in this kit.

**Step 3.** Using a wire crimper, crimp the connector(s) onto the correct color wire(s) as shown in the figure you identified in step 2.

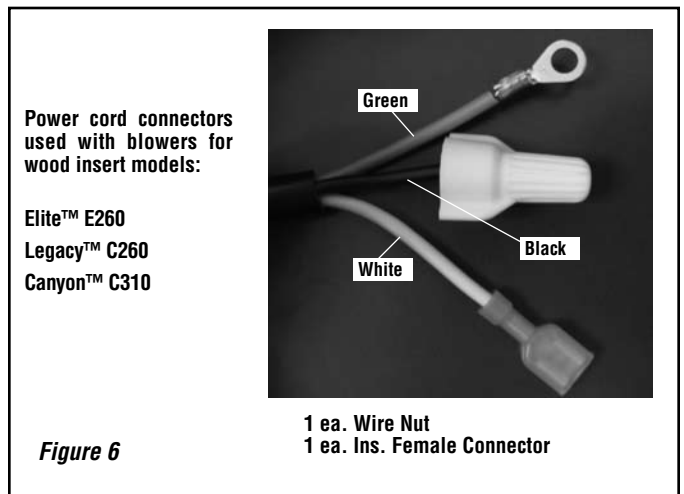
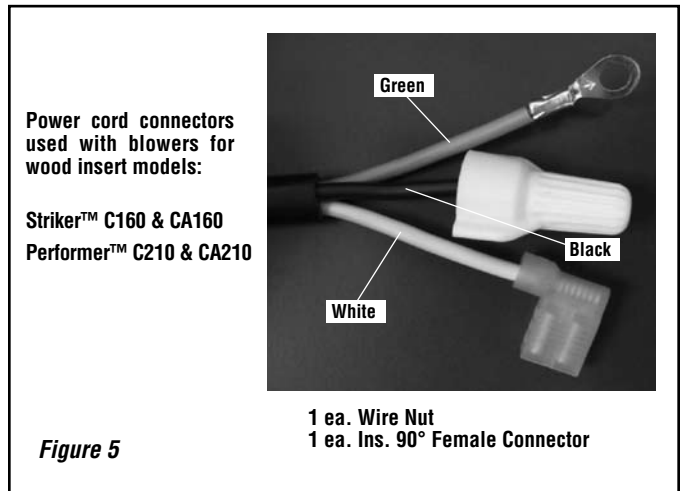
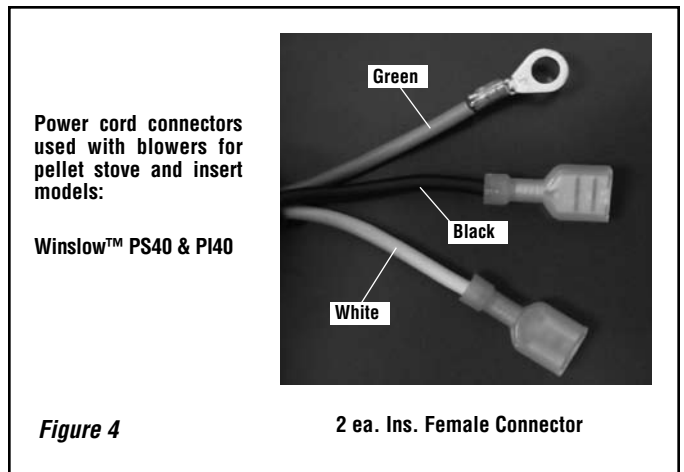
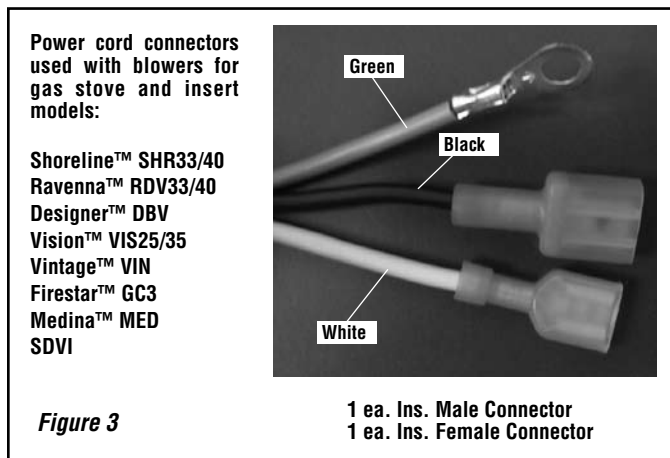
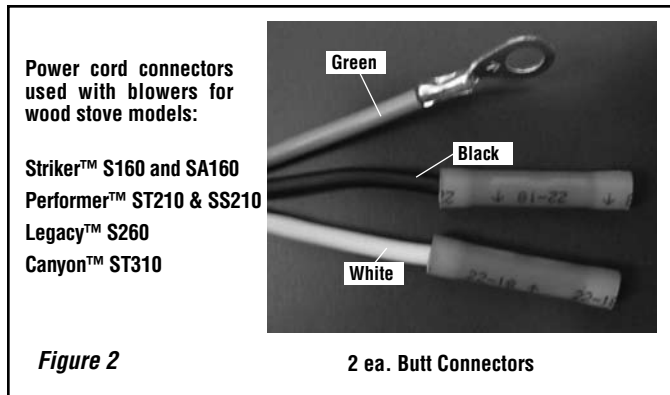
**Step 4. Models in Figures 2, 3 and 4 Only** - Using a 5/32" allen wrench or T-handle wrench, remove the ground screw and star washer (for green wire) on the existing power cord.

**Models in Figures 5 and 6 Only** - Using a #18 drill bit, drill out the rivet which secures the ground wire to the unit. Drill it straight through, once only, to ensure the hole is not drilled oversized.

**Step 5. Models in Figures 2, 3 and 4 Only** - Unplug the two connectors on the existing power cord. Install the new power cord by securing the green wire with the screw and star washer (provided). Plug in the two connectors on the power cord into the corresponding connectors on blower assembly or appliance.

**Models in Figures 5 and 6** - Unplug the female connector on the existing power cord. Remove the wire nut from black wires. Using a rivet gun, install the green wire on the new power cord into the existing hole your drilled out. Next, plug in the female connector on the power cord into the corresponding connector on blower assembly. Use the supplied wire nut to fasten the two black wires together.

**Ensure that the white wire connects with a white wire and the black wire connects with black wire.**



NOTE: DIAGRAMS AND ILLUSTRATIONS ARE NOT TO SCALE.

Lennox Hearth Products reserves the right to make changes at any time, without notice, in design, materials, specifications, prices and also to discontinue colors, styles and products. Consult your local distributor for fireplace code information.